

“Simple and extremely insightful – This approach will rapidly pinpoint and elevate leadership impact in the workplace.”

TEAM ME®

Legendary Leadership



Get to the heart of your unique leadership strengths, style and impact.

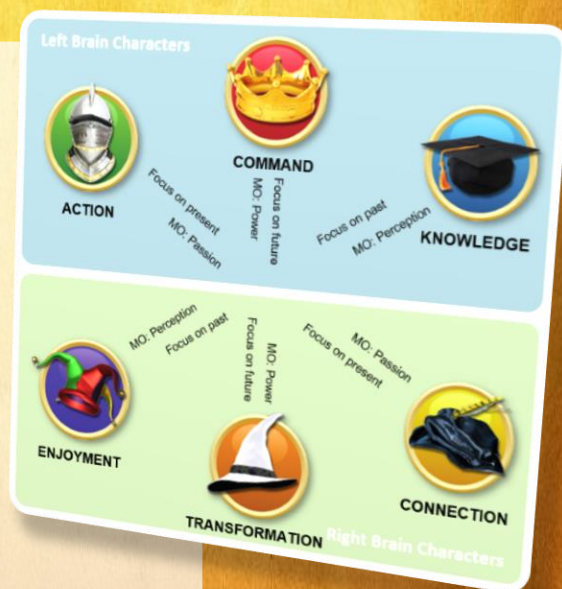
If you are a team leader seeking a way to rapidly and effectively elevate your influence, foster collaboration, enhance communication, and boost productivity - this is for you.

TEAM ME® gets to the root of the issues that are driving your performance as a leader - your approach, your focus, decision-making process, and actions. It's a method that puts hard numbers to soft issues; elevating your understanding in a highly engaging, enjoyable and actionable way.

Celebrating and enhancing your unique leadership style, this approach delivers extraordinary new insights that will immediately:

- Boost performance
- Increase productivity
- Leverage core strengths
- Elevate respect
- Reduce conflict
- Improve communication
- Enhance relationships
- Dissolve personality clashes
- Raise decision quality
- Explain team dynamics

With a new level of self-awareness and self-respect, you will notice an immediate enhancement in communication and a boost in cooperation. These insights will bring about an unmistakable, significant and lasting shift towards a more focused, supportive and productive culture.



“It’s quite amazing how accurate it is - it’s so interesting and explains a lot. Thanks!”

Cath Cimei. Global Client Services Director



“It highlighted where we needed better working practices - we’re definitely taking this on board in a positive way.”

Andrew Poynter. Group Leader UCLH.



Contact us today to permanently elevate your leadership performance

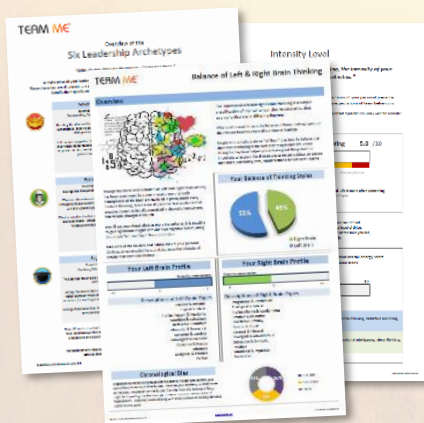
teammeleaders.com

Explode your leadership performance through intuitive insight & actionable self-awareness.

HOW IT WORKS

Our impactful engagement is short, low-cost, extremely straightforward and profoundly effective. From just 90 seconds of input online, we generate a comprehensive, highly insightful, 10-page, printable document: your personal **Leadership Insights Profile Report**.

Then we schedule a 45-minute, **Online Consultation**, where we discuss your leadership style, identify your innate strengths, typical focus, and any related challenges. Finally, we conclude with ways to increase your overall effectiveness, impact, and productivity.



COSTS

Imagine the cascading impact of your elevated leadership approach upon your whole team.

£147

per individual

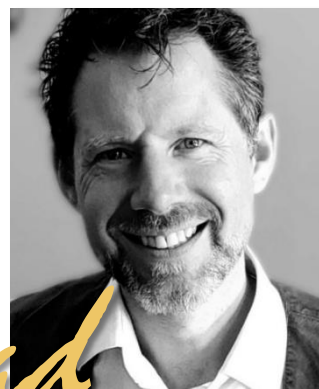
£POA

> 10 individuals

To help you masterfully navigate this transformative journey of discovery, you will be taught, encouraged and guided by Pad; an acclaimed author in the field of behavioral psychology, and the creator and chief facilitator of TEAM ME®

At each step you will benefit from his commitment to explode your self-awareness, unlock innate strengths, and discover practical applications that will permanently and positively impact your daily performance in the workplace.

Discover a new way for your leadership team to play their very best game - measurably improving productivity and profitability by elevating energy and engagement, clarity and collaboration.



Author & Founder of TEAM ME®

Contact us today to permanently elevate your leadership performance

teammeleaders.com